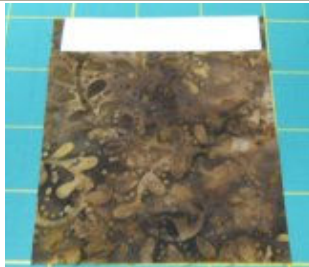


**Notebook Cases**  
**(for 4" x 6" side spiral bound notebooks)**  
**by Sherry Titzer**  
<http://www.atimetostitch.com>

**List of supplies & fabric cutting instructions provided with orders. Follow the steps in the order listed below!**  
**Step 1 – Credit Card ensemble, Step 2 - Tab closure, Step 3 – Notebook Case**

**STEP 1 – CREDIT CARD ENSEMBLE**



1

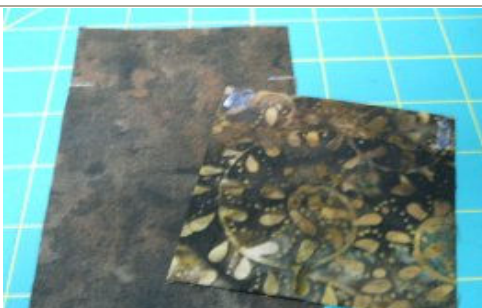


2



3

- 1 – Credit Card Sleeves - Cut fabric following instructions in text file. Fuse strips of Heat 'n Bond to top of all 5 "sleeve" pieces.  
 2 – Fold fabric at inside edge of tape, iron to crease fold. Remove paper backing, iron to fuse fold on all 5 sleeves.  
 3 – Use left over paper from tape to mark short lines on the front of each sleeve 5/8" down from the top (for spacing the sleeves)



4. On NARROW base fabric, mark lines on edges 1 1/4" down from top. On wrong side of sleeve, rub glue stick at corners. Flip sleeve over and place top at 1 1/4" marks on base fabric, press to set glue.



5. Stitch across bottom of sleeve with 1/4" seam. Add the remaining 4 sleeves down front of base fabric in the same manner. There are 5 credit card sleeves when finished.



6



7



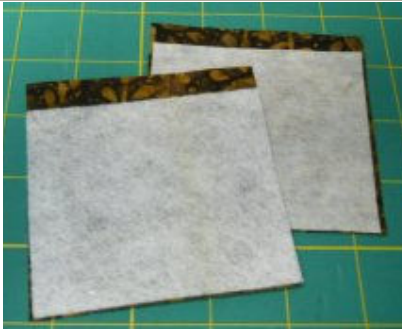
8



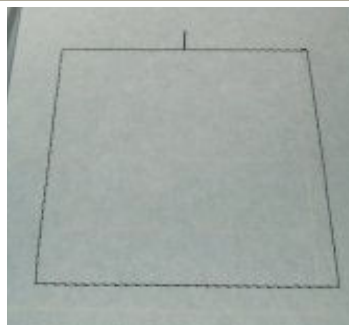
9

6. On wrong side of WIDE "base" fabric, add Heat 'n Bond to left side. With sleeve openings at the top, pin fabric even with the right side of the sleeve ensemble, stitch with 3/8" seam.  
 7. Flip fabric around the 3/8" seam keeping seam flat inside to create edge that looks bound. Press folded edge, remove paper backing from Heat 'n Bond tape and iron again to fuse fabric on back. (Note: The fabric that is wrapped around to the back will not completely cover the back on purpose to reduce bulk & will not show on the finished case at all.  
 8. Pin the interfaced "SIDE" base fabric to left side of sleeve ensemble and stitch with 3/8" seam.  
 9. Fold fabric out flat and press. Top stitch down both sides close to the seams. Set aside for now.

## STEP 2 – TAB CLOSURE



10



11



12

10. Add fusible fleece to wrong side of 1st piece of tab fabric & fusible interfacing to wrong side of 2<sup>nd</sup> piece. (1/2" of fabric should show at the top with no fleece or interfacing on both pieces)

11. Hoop cutaway stabilizer. Stitch placement outline directly on the stabilizer.

12. Center fabric (with fleece on back) inside outline keeping edge with no fleece edge at top. Tape corners, put hoop on machine.



13. Next step tacks fabric down & stitches a rectangle for velcro placement, or a small circle for snap placement.



14. For velcro - Rub glue stick on back of soft half of velcro & center inside outline. Next step stitches velcro down. (For snaps, skip this step)



15. Center interfaced fabric wrong side up inside outline. Tape corners. Last step stitches fabric down.



16. Remove from hoop, trim edges leaving 1/4" seam allowance at the sides and angled bottom. Do not trim the top. Notch corners for turning.



17. Turn tab closure right side out, press. Top stitch edge with 1/4" seam. Install button snap over stitched circle.



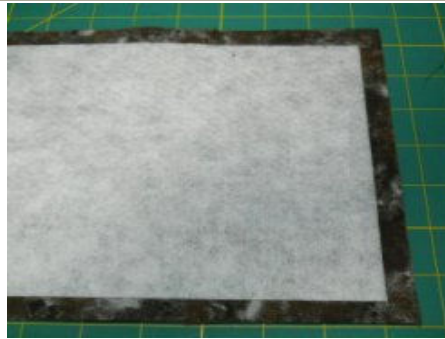
18. This shows the back of the finished velcro tab closure.



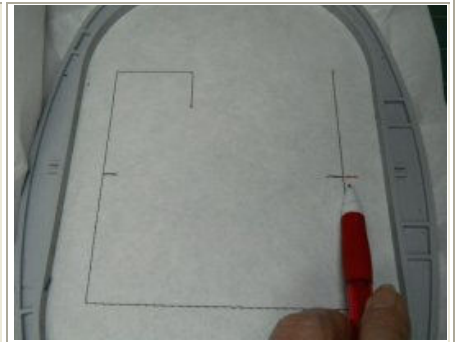
### STEP 3 – NOTEBOOK CASE



19



20



21

19. Fold fabric in half (to 3 3/4" wide), iron to crease fold at edges. With fabric flat, short mark lines over creased lines on both ends.  
 20. Flip fabric over, center fusible fleece evenly inside fabric edge, iron to fuse fleece to fabric. (Fabric turned sideways in picture)  
 21. Hoop cutaway stabilizer. Stitch placement lines on stabilizer. Extend right center line by marking directly on stabilizer with a pen.



22



23

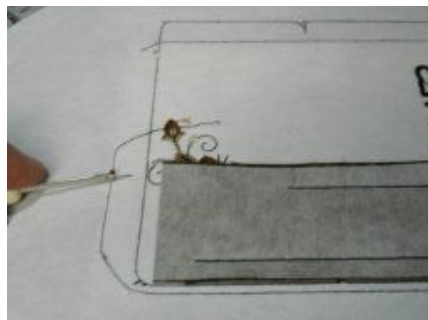


24

22. Place fabric sideways in hoop keeping center mark on fabric even with center mark on stabilizer & edge of fabric even with vertical placement line. Tape fabric at edges. Put hoop on machine, continue stitching design as instructed in text files.  
 23. When instructed, remove the hoop and lay on a flat surface. Carefully cut slit in the buttonhole holding fabric in place to avoid disturbing the stabilizer in the hoop.  
 24. Flip hoop over, center interfaced fabric inside inner outline (covers buttonhole). Tape fabric at ends, put hoop on machine.



25



26



27

25. Last step stitches the pen slot outline which secures the interfaced strip of fabric underneath.  
 26. Remove case from hoop, remove the basting stitches with seam ripper. Next, trim stabilizer close to design on back.  
 27. Prepare notebook pocket - On WRONG side of fabric, add Heat 'n Bond tape to left side. Fold fabric over at inside edge of tape & iron to crease. Remove paper backing & iron again to fuse folded fabric down.



28. For SNAP, install bottom half of snap over small stitched circle. With case right side up (NOTES lettering at top), center tab closure (wrong side up) over center mark on the left side. Stitch tab closure to case with scant 1/4" seam.



29. With case right side up, pin notebook pocket WRONG side up to left side over the tab closure. (I used 2 scrap pieces for notebook pocket) Next, pin credit card ensemble WRONG side up even with right side. Stitch both pieces to case with scant 1/4" seam.



30. Lining - Add Heat 'n Bond to wrong side on one edge. Pin lining WRONG side up to case even with the left side (over notebook pocket). Lining is shorter on right side which leaves opening to turn case right side out after next step.



31. Stitch final seam around entire edge of case with 3/8" seam which will stitch the lining to the case at the same time. Trim corners of case at 45 degree angle for turning.

32. Remove paper backing from Heat 'n Bond on lining & turn case right side out. Maneuver until edges are even & flat. Make sure edge of lining under the credit card ensemble is flat. Iron edge of case & over the credit card ensemble to fuse lining to case.



33. Last step - Top stitch around edge of case with a 1/4" seam. You are finished!!



Inside - 5 credit card slots with extra pocket underneath on the left side, with 4" x 6" side spiral bound notebook on the right side.