

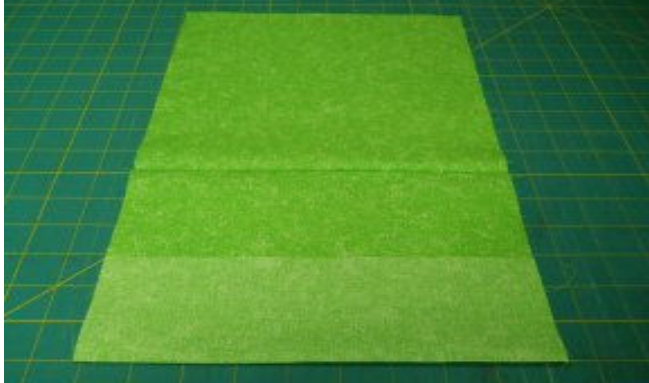
2 Pocket Burp Pads

by Sherry Titzer

<http://www.atimetostitch.com>

These are general instructions to show how they are made.
A complete supplies list & pattern template is provided with all orders.

Finished burp pad size: ~ 8" W x 17" H



1. Front fabric: Fold in half top to bottom (right sides facing), iron to crease. Fold 1 end up as instructed and iron to crease.



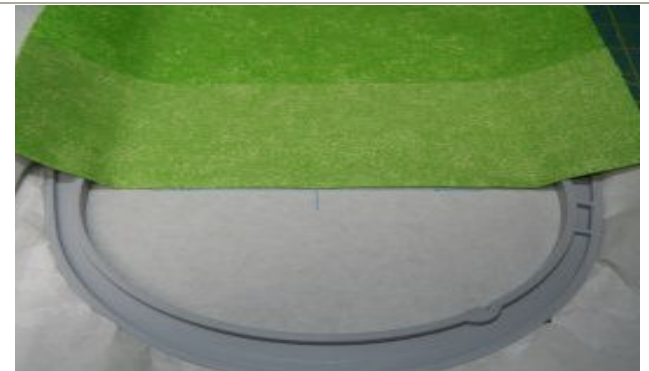
2. Back fabric: Fold in half lengthwise (right side facing), iron to crease. Fold both edges into center crease & iron to crease (creates 3 lines evenly spaced)



3. Center thin batting under "back fabric" & together stitching along creased lines. Press.



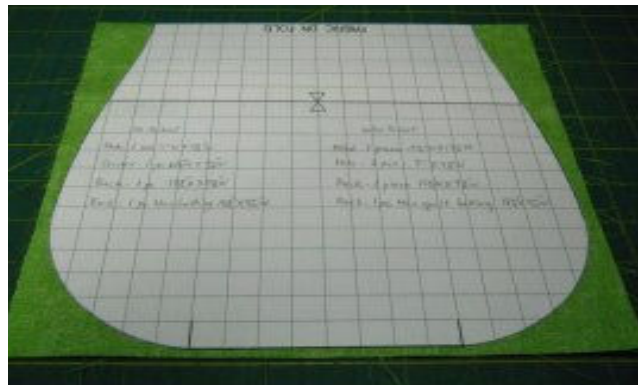
4. Prepare drool pockets – fold fabric in half & iron to crease, Top stitch folded edges. Set aside.



5. Stitch placement line on stabilizer. Spray stabilizer with temporary adhesive spray. Mark center on the fold & center next to placement line. (fabric fold at bottom)

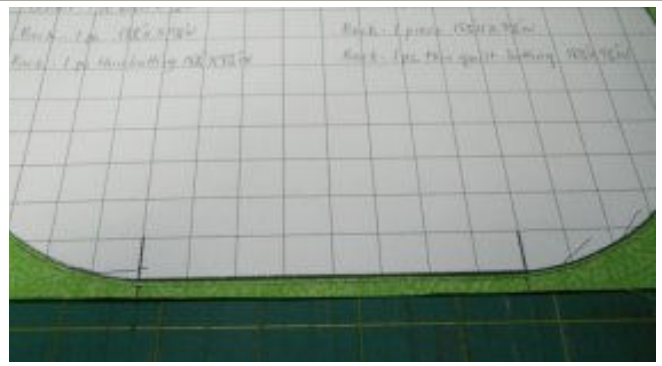
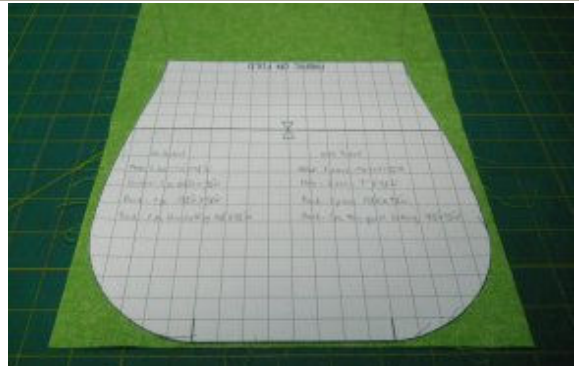


6. Unfold the fabric at the bottom & smooth in place until nice and flat. Put hoop on machine.



7. Stitch design following instructions in text files. When finished, remove basting stitches, trim stabilizer and press.

8. Fold fabric in half again (wrong side out). Center & trace pattern onto fabric keeping top of pattern even with the fold.



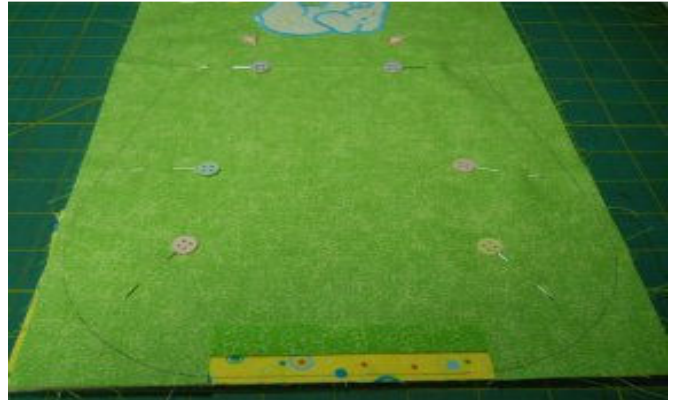
9. Unfold fabric and trace pattern on other end.

10. On end with no design, add short marks to the end of the fabric using the marks on pattern as your guide.



11. Between the short marks, measure up from the bottom (as instructed) and mark a line across.

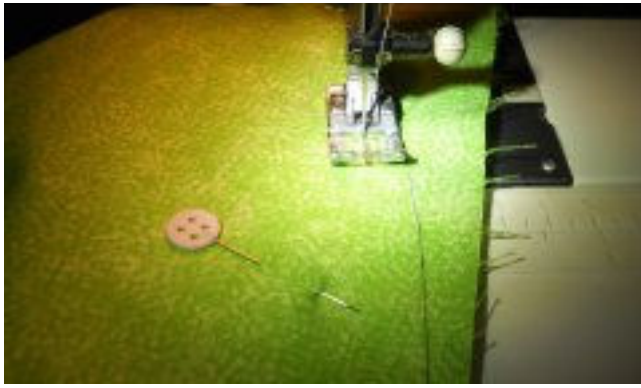
12. Clip marks & fold center fabric up at the line, iron to crease. (Creates opening to turn right side out later).



13. Place & pin drool pockets on each end. Keep

14. With back piece right side up, flip front piece over (pockets

pockets even with bottom of front fabric.



15. Stitch together (needle centered) keeping edge of foot even with pattern line.

still pinned) & pin to back piece (right sides facing).



16. Make sure you do not sew opening at the bottom closed. The opening needs to stay open!



17. Trim excess fabric with pinking shears leaving ~ 1/4" seam allowance. Use opening to turn right side out.



18. Maneuver & press burp pad keeping seams even along the edges. Top stitch around pad with 1/4" seam. You're finished!