

Candle Wraps – Satin Edge

by Sherry Titzer

<http://www.atimetostitch.com>

(Satin stitched edge around entire wrap pieces, joined at sides with zig-zag stitch.)

Wrap 1 (front) - 4.2"H x 6.45"W Wrap 2 (back) – 4.2"H x 6.45"W

SUPPLIES:

Vilene or Aqua Magic wash away stabilizer to fit your hoop

Candle wrap fabric - 4 pieces 5" x 7" (2 pieces for lining)

Fabric for appliqué – (see text file for specific sizes/colors)

Pellon fusible fleece - 2 pieces 5" x 7" (iron to wrong side of 2 pieces wrap fabric)

Pellon med weight fusible interfacing - 2 pcs 5" x 7" (iron to wrong side of wrap lining fabric)

Wonder Under transfer fusing web (for wrong side of appliques) Remove paper backing before using fabric in design.

TIP: STARCH ALL FABRIC UNTIL NICE & CRISP FOR EASIER TRIMMING!



1. Sew initial placement outline on vilene only.



2. Remove hoop, center fabric (fleece ironed to wrong side) over outline. Tape at corners, replace hoop.



3. Remove hoop, flip to backside. Trim the vilene from inside the outline.



4. With hoop still on back side, center prepared lining fabric over outline. Tape at corners. Replace hoop.



5. Next color tacks fabric down, stitches design outline.



6. Place appliqué fabric over outlines following the instructions provided in the text files.



7. Trim all appliqué fabrics close to outlines.



8. Continue stitching design following instructions provided in the text files.



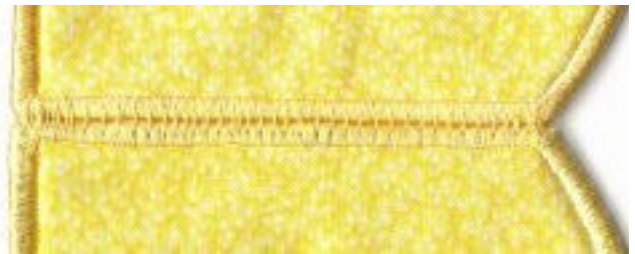
9. This picture shows the finished design stitched out.



10. Last step stitches satin edges around wrap piece. (Use same color thread in bobbin!)



11. Trim design from stabilizer. Run warm wet rag along edge to dissolve remaining stabilizer. Let dry.



12. With side seams touching, stitch together with zig-zag stitch on your machine using same color thread as satin stitched edge. (Settings: 1.0 stitch length, 3.5 stitch width)



13. Next, fold wrap (right sides facing), stitch opposite side with same zig-zag settings but let zig-zag stitches drop off edge a little so turned right side out the sides meet without overlapping. Or stitch last side together by hand!



14. Make matching mat using the Candle Mat PDF file provided on the HOW TO page on my website.



Mainstays jar candle from Walmart



(Label on bottom of jar)

These candle wraps were designed to fit 20 oz jar candles (or shorter jars with the same jar circumference). The candle jar shown above was purchased at Wal-Mart. **Note: For these candle sets (joined at sides with zig-zag stitch) be sure to take a finished wrap along with you to purchase the jar candles. We have discovered the jar circumference varies in size and some jars may be too big to fit!!**