

SNAP PURSES

by Sherry Titzer

<http://www.atimetostitch.com>

Text files provided with designs with step by step instructions and supplies you'll need to make the tote bags.
A separate PDF file with illustrations & instructions for constructing the actual tote bag is provided with your order

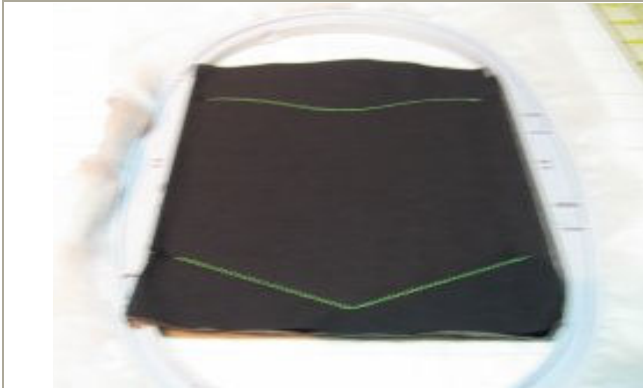
NOTE: Make tab closure and side pockets first!



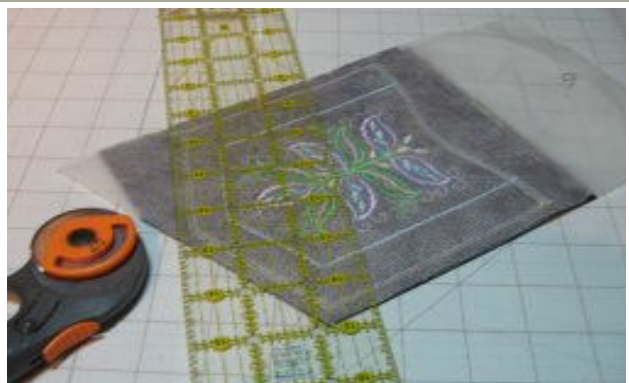
1. FRONT PKT: Hoop stabilizer. Stitch outline on stabilizer first. Center fabric over outline. Tape at corners. Continue stitching design as instructed in text files.



2. Before last step, center lining fabric over design in hoop. Tape at corners, put hoop on machine.



3. Last color tacks lining fabric down at top and bottom.



4. Remove from hoop, flip over. Trim fabric 1/4" larger than outline on all sides.



5. Clip curves, turn pocket right side out & top stitch along top curved edge. (Do not top stitch the bottom yet!)



6. SIDES: Placement line stitched on stabilizer first. Spray area with adhesive spray. (For smaller hoops the sides are created in 2 hoopings – read text files for details)



7. Mark center on 1 end of "sides" fabric. Center next to outline with edge next to placement line. Tape in place.



8. Cut fabric in half so each piece is 6 1/2" wide. Fold fabric in half, place pattern over both pieces to trim the sides.



9. Add fusible fleece to wrong side of center purse fabric.



10. Pin pocket in place. Stitch pocket sides down with 1/4" seam. Top stitch along bottom of pocket as well.



11. PULL TABS: Cut 2 pieces fabric 3 1/2" square. Fold both pieces in half & iron to crease.



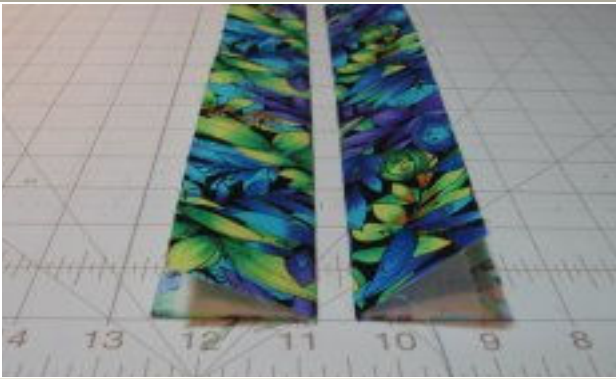
12. At folded edge, turn corners up to top center to create a triangle. Press to crease. (make 2)



13. Center triangle pull tabs at both ends of center fabric and stitch in place with 1/4" seam.



14. Pin 1 side to center fabric & stitch with 1/2" seam. Top stitch seam. Repeat on other side.



15. Cut strips for top band & add fusible fleece to wrong side. Fold pieces in half, iron well to crease the fold.



16. Pin top bands to both ends of the purse & stitch together with a 1/2" seam.



17. Press top band along seam (seam allowance facing to the top)



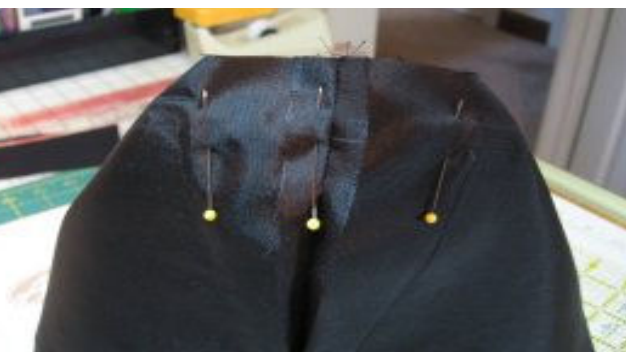
18. Fold top band out flat and pin shoulder straps in place. Mark straps 1 1/2" down from top edge as well.



19. Stitch straps to purse with 1/4" seam and then top stitch over 1 1/2" marks as well.



20. Pin purse sides together (top band is opened flat) and stitch sides with 1/2" seam.



21. Fold and pin bottom corners together and stitch with 1/2" seam. Set aside.



22. Prepare lining & add pockets as desired. Stitch bottoms together with 1/2" seam (8" basting stitches in center). Press seam open, top stitch. Reopen basting stitches.



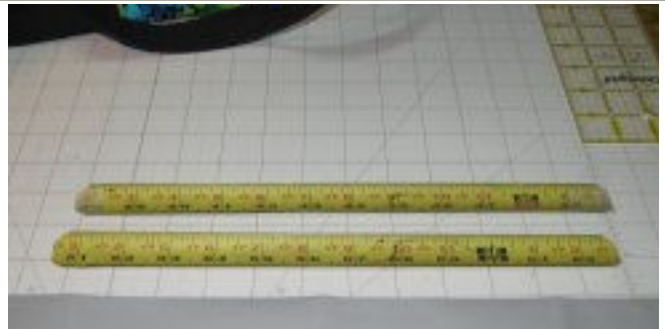
23. Stitch lining together the same way you did the purse. Turn lining right side out. (Purse remains wrong side out)

24. Slip lining inside purse (right sides facing) and pin the lining to top edge of band. Stitch together with 1/2" seam.



25. Pull purse through opening in lining and turn right side out.

26. Pin top band evenly around top using center crease as your guide. Stitch in place with 1/4" seam along bottom.



27. Re-open a side seam on top band on inside of purse. (Or re-open outside seam if it's easier for you!)

28. Cut 4 strips of 1" metal carpenter tape. Round ends of tape. Place 2 on top of each other, tape ends with duct tape.



29. Cut plastic canvas to size for purse bottom. Slip plastic canvas inside lining opening and then stitch opening close. Slide metal tape into each side of top band until centered & whip stitch opening closed. You're finished!