

# TV Remote Caddy

by Sherry Titzer  
<http://www.atimetostitch.com>

See text files (provided with designs) for list of supplies and specific cutting instructions.



1 – Cut fabric pieces, mark lines along 15" sides & the 5" ends of fleece strip. (3" line at top, 1 1/2" line at bottom) Add 3 1/2" x 5" fusible interfacing to top of 5" x 12" fleece strip.



2 – Fold larger fleece piece in half vertically and in half again horizontally. (top with 3" marked line on left when folded)



3 – Hoop cutaway stabilizer. Place folded fabric inside corner of placement lines. Unfold fabric flat, secure with temporary adhesive spray. (3" mark on right side after fleece flat in hoop)



4 - Stitch design on fleece following instructions in text files provided. Trim stabilizer close to design when finished.



5 - Pin 15" sides of fleece to 5" fleece strip. Stitch fleece strip in place with 1/2" seam allowance. (Interfacing not shown at top of 5" fleece strip but it should be there! (my mistake)



6 – Finger press seams open and top stitch the seams open flat at the top and bottom up to the marks on the fleece.



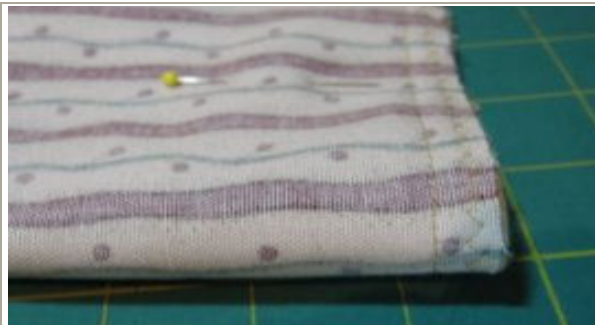
7 - On wrong side, fold fleece bottom up to 1 1/2" marked line and top stitch along edge to create a channel.



8 – On lining fabric, fold 1" down on 19" side, iron to crease. Right sides facing, stitch ends together with 1/2" seam allowance.



9 – With right sides facing. Pin lining to fleece at the top. Keep lining seam centered directly over a fleece seam (either one).



10 – Stitch lining to fleece with  $\frac{1}{2}$ " seam. Then flatten seam allowance fabric with wide zig-zag stitch along edge.



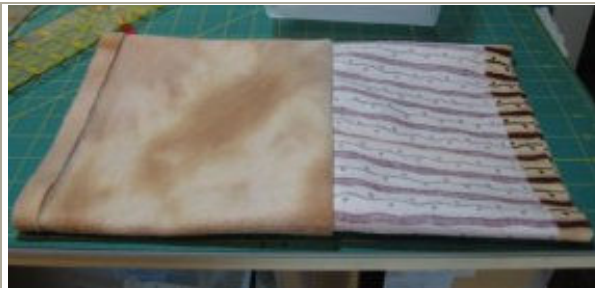
11 – Flip fabric so lining is on the outside. Measure up  $1\frac{1}{4}$ " from lining and pin fleece to create a  $1\frac{1}{4}$ " fleece channel at the top.



12 – Move needle to far left. Keep left edge of foot even with edge of fleece & top stitch around top. Move needle to center position and stitch a second row. Back stitch over top-stitched back seams for added stability.



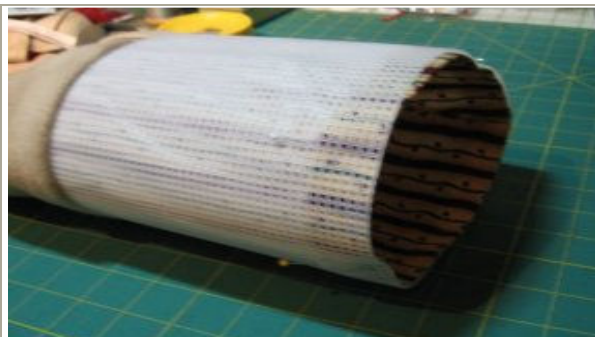
13 – This shows the two rows of top stitching around the top.



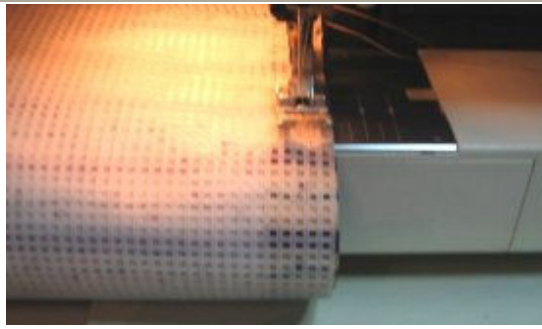
14 – IMPORTANT! - turn so fleece is right side out! Then pull lining out & away from the fleece as shown above.



15 - Fold plastic canvas till 6" sides meet. Whip stitch together with heavy thread or yarn to create a tube.



16 – Slip plastic canvas tube over wrong side of lining and pin together at bottom. Center the seam on the canvas over the seam on the lining.



17 - Stitch plastic canvas to lining with wide zig-zag stitch on sewing machine. (Switch to a 100/16 jeans needle to stitch through the plastic canvas & stitch slowly!)



18 - Next, push the fleece back down over the lining and canvas until it is smooth and flat.



19 - Re-open the top stitch back seams with a seam ripper.



20 - At bottom, re-open seam on inside of channel. Use a bobbin to thread narrow ribbon through channel.



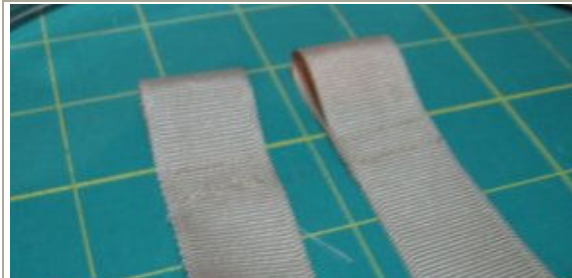
21 - Pull on ribbon gathering fleece until it is tight against plastic canvas on inside. Don't pull too tight & buckle the canvas! Pull ribbons ends to inside, no need to trim.



22 - Cut 3/8" OD polyethylene tubing and 1/4" dowel rod to length. Round ends of dowel rod with sand paper.



23 - Mark center of dowel and push dowel inside plastic tubing up to the dowel center mark.



24 - Cut ribbon in half. Run disposable lighter across ends to keep from fraying. On 2 ends, fold back 1 1/2" and stitch to form a 3/4" loop on each piece.



25 - Insert plastic tubing (with dowel) into one opening at the top & push through channel. As you reach each opening, insert the looped ribbon ends inside to catch the tubing and then push tubing back through the channel.



26 - When tubing fully inside channel, push end of tubing over dowel rod to center mark. Push/pull tubing until dowel is centered between openings to keep design centered on front - takes a little pushing/pulling to center the dowel!!!



27 - Print caddy bottom templates, trace on poster board and cut out each shape. Trace smaller template on plastic canvas with permanent marker and cut to that shape.



28 - Center smaller template on wrong side of headliner fabric & trace. Spread glue inside outline (Scotch glue stick) & press "shaped" canvas down over the glue.



29 - Center large template over right side of last piece of headliner fabric and trace the outline. Pin to bottom ensemble along the edges (canvas sandwiched between foam).



30 - Stitch together on sewing machine, stitching directly on the traced outline. Trim to size leaving 1/8" around edge.



31 - Push padded bottom down inside caddy.



32 - Cut 3/4" OD clear vinyl to 4" long.



Slip clear vinyl tubing over one of the ribbon ends before tying the ribbon together.  
 Push tubing down between chair arm rest and seat to secure caddy on chair!  
 Height is adjusted by tying ribbon ends closer or further away.



Front view of caddy hanging from chair.



Side view of caddy hanging from chair.

**Total cost to make a TV remote caddy:**

- Fleece fabric - \$1.25** (*fleece was \$4.90 for 5/8 yard - makes 4*)
- Lining - 7 1/2" strip of cotton fabric - 30 cents**
- Headliner Fabric - 66 cents** - \$14.99/yd - JoAnn's - 3/8 yd makes 10 bottoms
- 3/8" OD polyethylene tubing (milky white) - 24 cents** (*16 cents/ft - Lowe's plumbing dept*)
- 3/4" OD vinyl tubing (clear) - 10 cents** (*40 cents/ft - Lowe's plumbing dept*)
- 1/2" yard of 1/4" ribbon - 8 cents** (*6 yd roll - \$.97 at Wal-Mart*)
- 1 1/2 yd of 1" grosgrain ribbon - 47 cents** (*31 cents/yard at Wal-Mart*)
- 1/4" dowel rod - 5 cents** (*\$.37 for 3 ft at Wal-Mart - makes 9*)
- Plastic canvas - 50 cents** (*12" x 18" sheet \$.99 - JoAnn's - makes 2*)  
*(Use canvas scraps for padded bottom!)*
- Total (excluding sales tax): About \$3.44 each**